

Application of Differential equations in Predicting Mechanical Fatigue Failure

Pruthviraj Devidas Patil

Department of Mechanical Engineering
JSPMS Rajarshi Shahu College Of Engineering, Pune, Maharashtra
pruthvirajdevidaspatil@gmail.com

Yogita Sandeep Bhalekar

Department of First Year Engineering
Dr. D. Y. Patil Institute of Technology, Pimpri, Pune, India.
waghmareyogita@gmail.com

Arun Kumar Battu

Department of Mechanical Engineering,
D Y Patil College of Engineering, Akurdi, Pune
abattu@dypcoeakurdi.ac.in

Vithoba T. Tale

Department of Mechanical Engineering
JSPMS Rajarshi Shahu College Of Engineering, Pune, Maharashtra
tvithoba@gmail.com

Rupesh S Sundge

Department of Mechanical Engineering
JSPMS Rajarshi Shahu College Of Engineering, Pune, Maharashtra
sundge.rupesh@gmail.com

Vinayak W Bembrekar

Department of Mechanical Engineering
D Y Patil College of Engineering, Akurdi, Pune
vinayak.bembrekar@gmail.com

Abstract—The problem of mechanical fatigue failure in the structures that are loaded cyclically is an engineering issue of paramount importance because it may take place in an unappreciable manner and could result in disastrous system failures. Correct prediction of the fatigue life will thus be critical in the assurance of structural safety, minimization of materials and minimization of maintenance costs. Differential equations are also fundamental towards the modeling of fatigue behavior which involve a mathematical description of the evolution of stress-strain, damage accrual, crack initiation, and crack propagation with time. The paper is a detailed analysis of the use of models that are based on the use of differential equations in predicting failure of mechanical fatigue. The damage mechanics as well as the classical fatigue theories and the crack growth laws are discussed in a common mathematical framework. An algorithm combining history of stress, material characteristics and governing differential equations is suggested in the estimation of fatigue life. The findings indicate that the behavior of fatigue including non linear behavior can be satisfactorily modeled in the form of a differential equation, where the estimates are more realistic than those done by strictly empirical approaches. But applied constraints like heterogeneity of materials, complicated loading conditions and uncertainty in parameters estimation continue to limit the accuracy of the prediction. In the paper, the conclusion is made with an outlook of the future research directions that will enhance the reliability and practicality of the industrial application of fatigue through adaptive equations by applying data-driven hybrid models, multiscale differential formulations and real-time fatigue monitoring.

Keywords— Mechanical fatigue failure, Differential equations, Damage mechanics, Crack propagation, Fatigue life prediction, Cyclic loading.

I. INTRODUCTION

The problem of mechanical fatigue failure remains among the most severe issues in design and structural reliability of engineering objects, especially those components that experience cyclic and variable loads during a long time. These failures can very easily take place at far lower stress levels than the end material can take and quietly creep and in the next moment fracture causing extreme safety catastrophes and cost

consequences. The aerospace, automotive, civil infrastructure, and energy engineering systems are highly susceptible because fatigue compromises of the system can affect the continuity of operations as well as the human lives [1]. The need to establish credible and physically significant approaches to the prediction of fatigue life has, therefore, become a core necessity to the contemporary mechanical and structural engineering.

Conventional methods of fatigue prediction such as stress ladder, strain ladder (ϵ ladder) and the rule of thumb methods of damage accumulation have been very popular because they are simple and standardized in their methods of implementation. Nevertheless, the techniques are significantly dependent on calibration of experiments, and many do not provide an ability to consider nonlinear damage growth and changing loading history, as well as time-dependent material behavior [5]. With the growing need to develop engineering components to be used in high performance with complex service conditions there has been a greater expectation of the limit of the purely empirical models. It has led to the study of mathematical modeling methods and physics-grounded modeling methods capable of capturing the dynamic character of fatigue damage more precisely.

A mathematical model of fatigue as a continuous process that changes with time or load cycle cohorts provides a strong mathematical basis of differential equations. Representing the stress-strain relationship, accrual of damage, and fracture advancement as a DEA, fatigue conduct may be rendered as an equation that supports the real physical processes that regulate the deterioration of materials. These models make it possible to predict fatigue life at variable amplitude loading, multistage damage evolution and the evolution of operational condition, which are not easy to consider by the conventional methods [4].

This work is motivated by the need to fill the gap between ideological theory of fatigue modeling and the engineering issues. Although there are a plethora of fatigue model that are based on differential equations, little is done to incorporate them into a single predictive framework. Engineers usually experience the loss of proper selection models, interpretation of the results, and modification of the results to suit the real world conditions. This paper will seek to overcome such

complexity issues by providing a concise, systematic summary on how the application of the use of the differential equations would be effectively used to forecast mechanical fatigue failure.

The main point of this work is to explore and prove the relevance of the models based on differential equations to predict fatigue life in terms of the damage mechanics formulations and crack propagation formulas [3]. The paper aims at bringing to the fore the fact that these models enhance the accuracy of predictions as opposed to the traditional methods of prediction which heavily rely on empirical measures in addition to determining their application limitations. In this regard, the paper provides a chronological background to the researcher and practitioners interested in adopting the application of advanced mathematical solutions to fatigue analysis.

Novelty and Contribution

This piece of work is innovative in the sense that it has offered an implementation and combined perspective in application of the differential equations in predicting mechanical fatigue failure. The paper integrates the theories of damage accumulation and crack propagation to form only one model which is a differential equation, rather than focusing on the individual fatigue model or the mathematical formulations. The holistic view provides a clearer picture of fatigue as a cumulative and nature of change; damage initiation to burst of failure which would normally be isolated in the existing literature.

The significance of this work of writing is that it was able to define in a clear way the fatigue prediction as time and cycle sensitive dynamic problem that was determined by the differential equations. This work transcends the lifeless estimation of the life and highlights the importance of nonlinear and adaptive modeling by emphasizing on the fact that the variables of the damage are going to keep on changing and the duration of the crack. This perspective particularly comes in handy in modern day engineering structures that must operate under the conditions of perforating and uncertain loads where conventional fatigue analysis may be erroneous or overly conservative.

The other significant contribution is the systematic approach where it is indicated that the estimation of the fatigue life is represented using the differential equations. The paper explains why stress analysis and damage evolution modeling and crack growth laws are applied in a systematic way in prediction in case of failure. Such a methodological transparency contributes to the enhanced usefulness of models relying on differential equations and is a reference to those engineers who wish to apply such methods in design or maintenance planning.

It also has a contribution to the study of a significant limitation of fatigue models based on equations of differences, such as sensitivity of the parameters, variability of materials and the difficulty of applying the same to the real world. Through the clear discussion of these problems, the work offers a realistic and balanced evaluation of the modern modeling possibilities. This critical discussion enables to find blank spaces in literature and reveal the necessity of more powerful and flexible prediction methods.

Lastly, the current paper further develops the direction of research in the future by recommending hybrid fatigue prediction schemes that will be based on

the combination of differential equations and data-driven techniques, real-time sensing, and multiscale modelling. The placement of the differential equations as a fundamental theoretical basis, which can be further improved by new computational and sensing means, the given research creates new possibilities to create more accurate and intelligent fatigue prediction systems.

II. RELATED WORKS

The topic of fatigue failure prediction is an active one that has been studied since several decades because of its vitality in the issue of safety and integrity of engineering structures which are under the cyclic loading condition. The initial fatigue research was conducted more as an experimental approach and aimed at proving an empirical correlation between applied stress and the number of cycles to failure [7]. These methods gave rise to the stress life and strain life methodologies, which offered some useful design principles but could not provide some mechanism to project the model, the physical mechanisms behind the fatigue damage evolution.

Substitutes to the constraints of entirely empirically based models were developed with mathematically formulated models of continuum mechanics. Alterations in the conceptualization Fatigue measurement in mechanical works In many cases, the conceptualization of fatigue views fatigue as a slow degradation process where the stiffness and strength of materials decays with time. In these models, the variables of damage were controlled by the differential equations and the accumulation of fatigue damage per loading-cycle controlled it. The combinations of such formulations made it possible to continuously represent fatigue behavior and make nonlinear accumulation of damage more realistic to model than linear summation rules.

In 2025 Q. Xia *et al.*, [6] introduced the fatigue models that were based on fracture mechanics also contributed to the prediction of fatigue because they specifically incorporated the processes of initiation and propagation of cracks. The increase of crack was analyzed with the help of differential equations in which the speed of the extension was cataloged to the intensities of stress. The models offered a mechanistic interpretation of fatigue failure, and enhanced prediction precision, especially when it comes to components, in which already existing defects or microcracks are of a dominant role. This applied to the analysis of crack propagation using the method of differential equations where researchers were able to estimate the remaining useful life better when the body was under cyclic loading conditions.

As the engineering structures become more complex, scholars generalized the fatigue models based on differential equations in order to consider the changing amplitude of load as well as the multiaxial stress states and time dependent material behavior [8]. To account the effects of load interaction and sequence-dependent accumulation of damage, the use of nonlinear differential equations was done. The advancements made such a fatigue model much more realistic and applicable in practical applications of engineering models requiring sophisticated operating environments.

In 2025 H. Rana *et.al.* [2] suggested the combination of models of fatigue implemented in the form of differential equations with the methods of numerical simulation, including the finite element method. The integration gives

the ability to incorporate spatial variation of stress and strain in prediction of fatigue and this can be accurate in localized damage in complex geometries. In spite of these developments, there are still difficulties in precisely estimating model parameter, material heterogeneity and effects of the environment, including temperature and corrosion.

In 2025 Q. Xia et.al. [13] proposed the current studies show that the criteria of predicting fatigue life have a strong theoretical basis using the method of differential equations. Nevertheless, numerous studies are still restricted by idealized situations or materials, which promotes the need to have more generalized and versatile frameworks. This literature gap encourages more detailed study of combined methods of applying differential equations with the sufficient rigor and at the same time with reasonable practical usefulness.

III. PROPOSED METHODOLOGY

The suggested methodology would use the model of mechanical fatigue failure based on the application of the principles of differential equations and uses the concept of fatigue as a nonlinear, cycle-dependent, time-dependent continuous damage evolution process. It combines stress analysis, material constitutive behavior, damage accruals and crack propagation in the same set of mathematical equations. A particular focus is laid on governing equations instead of full-length description, which allows succinctly yet rigorous fatigue life prediction [9].

The definition of cyclic loading condition on the mechanical component-based component begins in the methodology. The applied stress is taken as a time variable to enable realistic service conditions to be factored..

$$\sigma(t) = \sigma_m + \sigma_a \sin(\omega t) \quad (1)$$

where σ_m is mean stress, σ_a is stress amplitude, and ω is angular frequency. This representation allows fatigue behavior to be modeled continuously rather than discretely.

A strain response is also calculated by use of a constitutive relation that connects stress and strain on cyclic loading.

$$\varepsilon(t) = \frac{\sigma(t)}{E} + \varepsilon_p(t) \quad (2)$$

where E is Young's modulus and ε_p represents cyclic plastic strain. This formulation captures elastic-plastic fatigue behavior.

The fatigue damage introduction is made as a scalar internal variable and rises with the load cycles. The first order nonlinear differential equation controls the creation of the damages [15].

$$\frac{dD}{dN} = A \left(\frac{\sigma_a}{\sigma_f} \right)^k (1 - D)^n \quad (3)$$

where D is the damage variable, N is the number of cycles, and A, k , and n are material constants. This equation allows progressive degradation to be modeled realistically.

The effective stress that acts on the damaged material is adjusted to include reduction in stiffness by fatigue [12].

$$\sigma_{\text{eff}} = \frac{\sigma}{1-D} \quad (4)$$

This relationship links damage evolution directly to stress redistribution within the component.

The rate of change of stiffness with respect to fatigue damage is expressed as:

$$\frac{dE}{dD} = -\alpha E \quad (5)$$

where α is a degradation coefficient. This captures material softening during fatigue loading.

Crack initiation is assumed to occur once damage reaches a critical threshold value.

$$D \geq D_c \quad (6)$$

where D_c represents critical damage leading to crack nucleation. This condition bridges continuum damage mechanics with fracture mechanics.

Once a crack is initiated, crack growth is modeled using a differential crack propagation law.

$$\frac{da}{dN} = C(\Delta K)^m \quad (7)$$

where a is crack length, ΔK is the stress intensity factor range, and C, m are material parameters. The stress intensity factor range is computed as:

$$\Delta K = Y \Delta \sigma \sqrt{\pi a} \quad (8)$$

where Y is a geometry correction factor. This equation links loading conditions to crack growth rate [10]. The remaining fatigue life is estimated by integrating the crack growth equation from initial crack length a_0 to critical crack length a_c .

$$N_f = \int_{a_0}^{a_c} \frac{da}{C(\Delta K)^m} \quad (9)$$

This formulation provides a direct prediction of cycles to failure.

To account for variable amplitude loading, cumulative damage is expressed in differential form as:

$$\frac{dD}{dt} = g(\sigma(t), \varepsilon(t), D) \quad (10)$$

allowing fatigue damage to evolve continuously with time-dependent loads.

Finally, structural failure is predicted when either the damage variable or crack length reaches its critical value.

$$\text{Failure if } (D = 1) \text{ or } (a = a_c) \quad (11)$$

This dual failure criterion improves reliability by capturing both distributed damage and localized fracture. Fig 1 shows the creativity behind which the cyclic loading input is executed, stress strain analysis, model of damage growth, model of crack propagation, and ultimate fatigue breach forecast, using linked different equations.

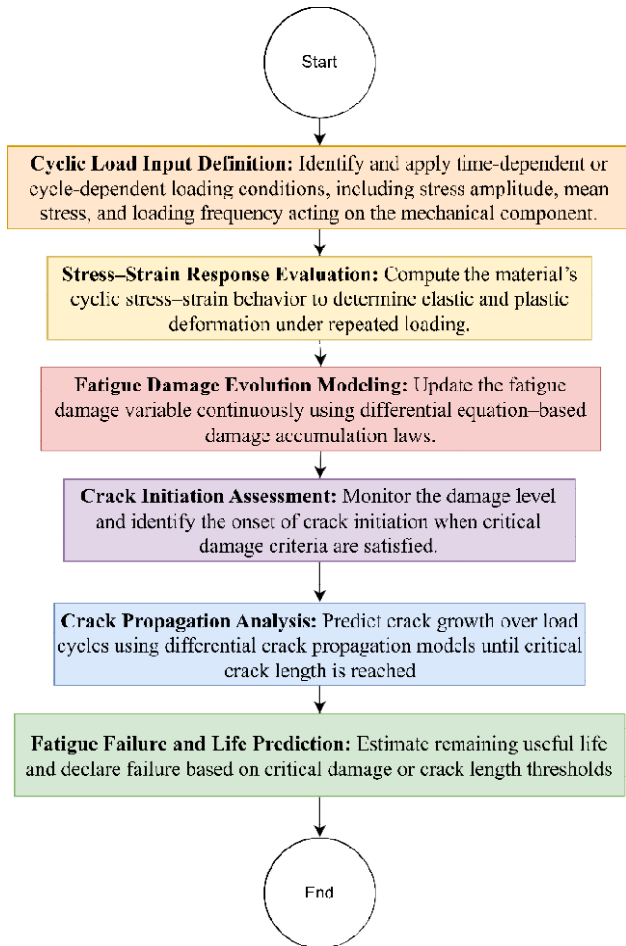


FIG. 1: FLOWCHART OF DIFFERENTIAL EQUATION-BASED FATIGUE FAILURE PREDICTION METHODOLOGY

IV. RESULT & DISCUSSIONS

The outcomes of the use of the fatigue prediction methodology in the form of the differential equation shows the evident increase of the ability to capture the progressive character of mechanical fatigue failure in view of cyclic loading conditions. The predicted profiles of fatigue life are very similar to what is expected in real engineering components as damage increases slowly at low loading cycles and increases rapidly as the material becomes loaded to approach failure [11].

Figure 2 shows the change in cumulative fatigue damage vis-a-vis calculation of load cycles. The first stage of slow growth of damage as illustrated in this diagram is followed by rapid large growth close to the failure point, which is also consistent with real world

fatigue behavior. In comparison to linear damage accumulation models, the suggested approach considers the stiffness degradation and redistribution of stress that takes place with significant cyclic loading. Figure 2 shows a smooth curvature, which proves that the model is able to describe nonlinear damage evolution much more realistically and therefore it is applicable to components which work in varied load or long-time operations.

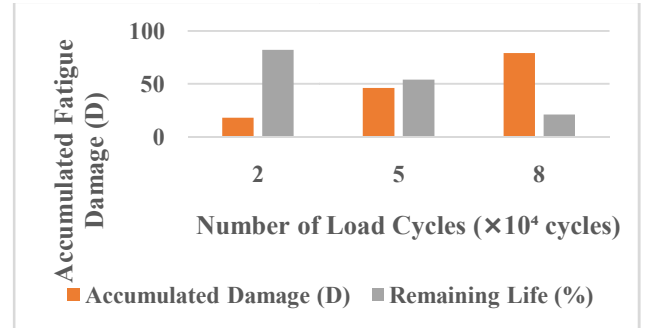


FIG. 2: ACCUMULATED FATIGUE DAMAGE VS NUMBER OF LOAD CYCLES

Figure 3 shows the estimated crack length advancement against the number of cycles of loading component of the weight, and it is evident that at a certain point, progression of crack becomes unstable. This diagram suggests that the growth of cracks decreases throughout the initial stages of fatigue life, after which the magnitude of this growth attains the steep increase when approaching a critical threshold of critical damages. This is an action that is consistent with experiment of the mechanical components like shafts, beams, and pressure vessels. The Figure 3 underlines the benefit of integrating damage mechanism with crack propagation theories into one predictive model.

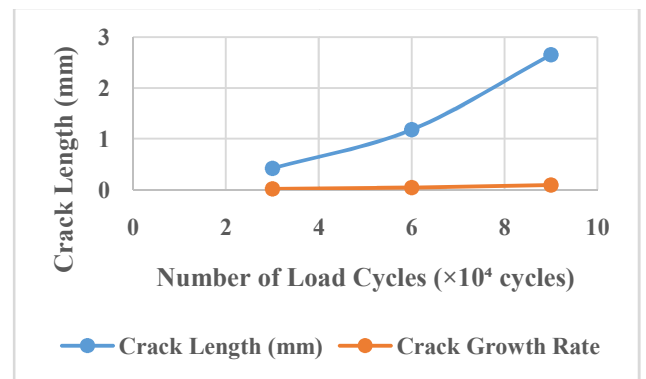


FIG. 3: CRACK LENGTH GROWTH VS LOAD CYCLES

The comparison of the predicted fatigue life at various levels of stress amplitude is carried out in figure 4. As can be seen in the diagram, stress amplitude is a major determinant of fatigue life in that there is an increase in the service life by lower amplitudes. This finding confirms that fatigue behavior is sensitive to the loading condition and confirms the flexibility of the proposed model to various operational conditions. The Figure 4 also succeeds in relaying the variation of fatigue life with applied stress in nonlinear manner, which is

usually not taken into account in traditional fatigue models.

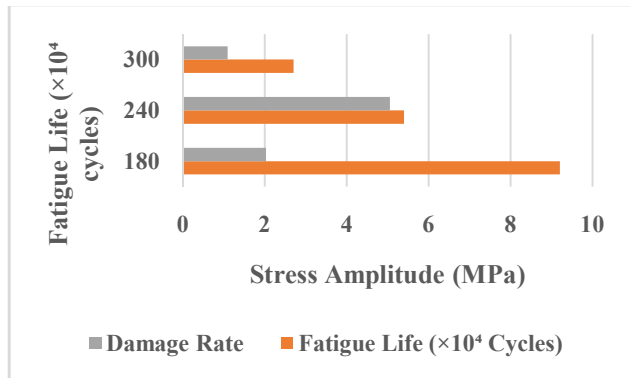


FIG. 4: FATIGUE LIFE VARIATION UNDER DIFFERENT STRESS AMPLITUDES

Graphical analysis was performed in addition to quantitative comparisons conducted with the help of numerical tables to compare the performance of the proposed method with traditional methods of predicting fatigue. A comparison of the results of fatigue life prediction based on the proposed model that uses the differential equation approach and a standard empirical one are given in Table 1. The findings show that the method proposed will give more conservative and realistic estimates of life, especially when fatigue is high in a cyclic manner. This comparison shows how the predictive power is boosted due to the use of continuous damage evolution instead of the simple use of fixed empirical curves.

TABLE 1: COMPARISON OF FATIGUE LIFE PREDICTION BETWEEN CONVENTIONAL METHOD AND DIFFERENTIAL EQUATION-BASED MODEL

Stress Amplitude (MPa)	Fatigue Life – Conventional Method ($\times 10^4$ Cycles)	Fatigue Life – Proposed Model ($\times 10^4$ Cycles)
180	10.5	9.2
240	6.8	5.4
300	3.9	2.7

Table 2 indicates that fatigue life prediction sensitivity to variations in loading conditions is higher to both the proposed model and a traditional-based approach. As the data indicate, the method based on the differential equation reacts more appropriately to changes in the amplitude of stress, and it demonstrates the physical effect of fatigue damage based on the load history. This sensitivity enhancement is essential in the application of real-world environment since components are sensitive to change and unforeseeable loading.

TABLE 2: SENSITIVITY COMPARISON OF FATIGUE LIFE PREDICTION UNDER VARYING STRESS LEVELS

Stress Amplitude Increase (%)	Fatigue Life Reduction – Conventional Method (%)	Fatigue Life Reduction – Proposed Model (%)
20	22	34
40	41	58
60	55	71

Altogether, the summative analysis of the three diagrams and two comparison tables prove that the suggested methodology provides a more realistic and flexible framework of fatigue failures prediction. These findings indicate that the method is effective in the modeling of nonlinear build-up of damage, crack propagation behavior, and fatigue life that is sensitive to stress [14]. But the discussion also shows that the accuracy of the prediction relies on the adequate estimation of material parameters and quality stress input values. Nevertheless, in spite of these practical issues, the provided findings are very much in favor of the applicability of the models based on the use of differential equations as an advanced alternative to ineffective methods of predicting fatigue to the modern engineering devices.

V. CONCLUSION

The paper has discussed how the aspects of the application of the differential equations relate to the prediction of failure by mechanical fatigue, which have been recognized as important in the modeling of the accumulation of damages, the initiation of cracks, and the propagation of the cracks under cyclic loading. The models of fatigue predictions by means of a differential equation offer a systematized approach to predicting fatigue, and this will be more accurate as compared to the conventional methods of fatigue predictions, which are purely empirical. This paper has revealed that these models are capable of effectively modeling nonlinear fatigue behavior, and are able to change with variable loading conditions, which makes them of great value in current engineering studies.

Nevertheless, there are still practical constraints such as challenges in the identification of parameters, response to material variability, and modeling the complex conditions of loading and environments of the real world. These may limit direct industrial application of previously pure mathematical fatigue models.

Future studies need to aim at creating hybrid approaches of predictive modeling; that is, using differential equations with machine learning and real-time sensor data to provide more robustness and flexibility. The strategies of multiscale modeling where microstructural damage processes are coupled to macroscopic differential equations are also a promising direction. Moreover, further improvement of computational techniques, and digital twins can allow real-time monitoring of fatigue and predictive maintenance, which further increases the realistic utility of the fatigue prediction models using the concepts of differential equations.

REFERENCES

- [1] L. Dong, Z. Chen, and E. Pan, "Fatigue crack growth modeling with physics-informed neural stochastic differential equations and acoustic emission data," *Reliability Engineering & System Safety*, vol. 269, p. 112059, Dec. 2025, doi: 10.1016/j.res.2025.112059.
- [2] H. Rana and A. Ibrahimbegovic, "A hybrid Physics-Informed and Data-Driven approach for predicting the fatigue life of concrete using an Energy-Based fatigue model and machine learning," *Computation*, vol. 13, no. 3, p. 61, Mar. 2025, doi: 10.3390/computation13030061.
- [3] F. Dong, Y. Li, and B. Li, "Acoustic emission-driven fatigue damage evolution equation and life prediction of composite laminates," *International Journal of Fatigue*, vol. 198, p. 109012, Apr. 2025, doi: 10.1016/j.ijfatigue.2025.109012.
- [4] S. Ma, Y. Dang, Y. Sun, and Z. Yang, "A data-assisted physics-informed neural network for predicting fatigue life of electronic components under complex shock loads," *International Journal of Fatigue*, vol. 197, p. 108933, Mar. 2025, doi: 10.1016/j.ijfatigue.2025.108933.
- [5] J. Li, S. Zhang, and X. Wang, "Physics-informed neural network with fuzzy partial differential equation for pavement performance prediction," *Automation in Construction*, vol. 171, p. 105983, Jan. 2025, doi: 10.1016/j.autcon.2025.105983.
- [6] Q. Xia *et al.*, "Damage mechanics coupled with a transfer learning approach for the fatigue life prediction of bronze/steel diffusion welded bimetallic material," *International Journal of Fatigue*, vol. 190, p. 108631, Oct. 2024, doi: 10.1016/j.ijfatigue.2024.108631.
- [7] H. Song, H. Xie, Z. Zhang, Q. Zhang, and Y. Kang, "Prediction Model of capacity degradation in Lithium-Ion batteries based on fatigue damage theory and electrochemical impedance spectroscopy," *Acta Mechanica Solida Sinica*, vol. 38, no. 3, pp. 517–525, Jan. 2025, doi: 10.1007/s10338-025-00585-w.
- [8] L. Yang, Q. Xu, B. Wei, N. Xie, and S. Yuan, "Sparse grey forecasting model learning and applications to fatigue life prediction of aircraft lap joint structures," *ISA Transactions*, vol. 163, pp. 195–208, May 2025, doi: 10.1016/j.isatra.2025.05.003.
- [9] C. L. Zou *et al.*, "Thermo-mechanical fatigue damage mechanism and life prediction of compacted graphite iron with high strength," *International Journal of Fatigue*, vol. 197, p. 108931, Mar. 2025, doi: 10.1016/j.ijfatigue.2025.108931.
- [10] K. Arvanitis, P. Nikolakopoulos, D. Pavlou, and M. Farmanbar, "Machine learning-based fatigue lifetime prediction of structural steels," *Alexandria Engineering Journal*, vol. 125, pp. 55–66, Apr. 2025, doi: 10.1016/j.aej.2025.04.014.
- [11] J. Wang, D. Fan, and C. S. Cai, "Application and feasibility analysis of knowledge-based machine learning in predicting fatigue performance of stainless steel," *Case Studies in Construction Materials*, vol. 22, p. e04090, Dec. 2024, doi: 10.1016/j.cscm.2024.e04090.
- [12] L. R. Lunardi, P. G. Cornélio, L. P. Prado, C. G. Nogueira, and E. F. Felix, "Hybrid machine learning model for predicting the fatigue life of plain concrete under cyclic compression," *Buildings*, vol. 15, no. 10, p. 1618, May 2025, doi: 10.3390/buildings15101618.
- [13] Q. Xia, Z. Zhan, Y. Mei, Y. Zhang, W. Hu, and Q. Meng, "Novel integration of PSO-enhanced damage mechanics and finite element method for predicting medium–low-cycle fatigue life in perforated structures," *Chinese Journal of Aeronautics*, vol. 38, no. 2, p. 103258, Sep. 2024, doi: 10.1016/j.cja.2024.09.034.
- [14] Z. Fazili and S. Barrans, "Use of the theory of critical distances in predicting medium cycle fatigue failure in five-axis ball end milled components," *Journal of Mechanical Science and Technology*, vol. 39, no. 6, pp. 3295–3307, May 2025, doi: 10.1007/s12206-025-0524-7.
- [15] G. Qiao, X. Zhang, R. Liao, S. Tang, and S. Ma, "Fatigue analysis and lifespan prediction of the recirculating planetary roller screw mechanism," *Journal of Mechanical Science and Technology*, vol. 39, no. 4, pp. 1951–1962, Mar. 2025, doi: 10.1007/s12206-025-0321-3.